

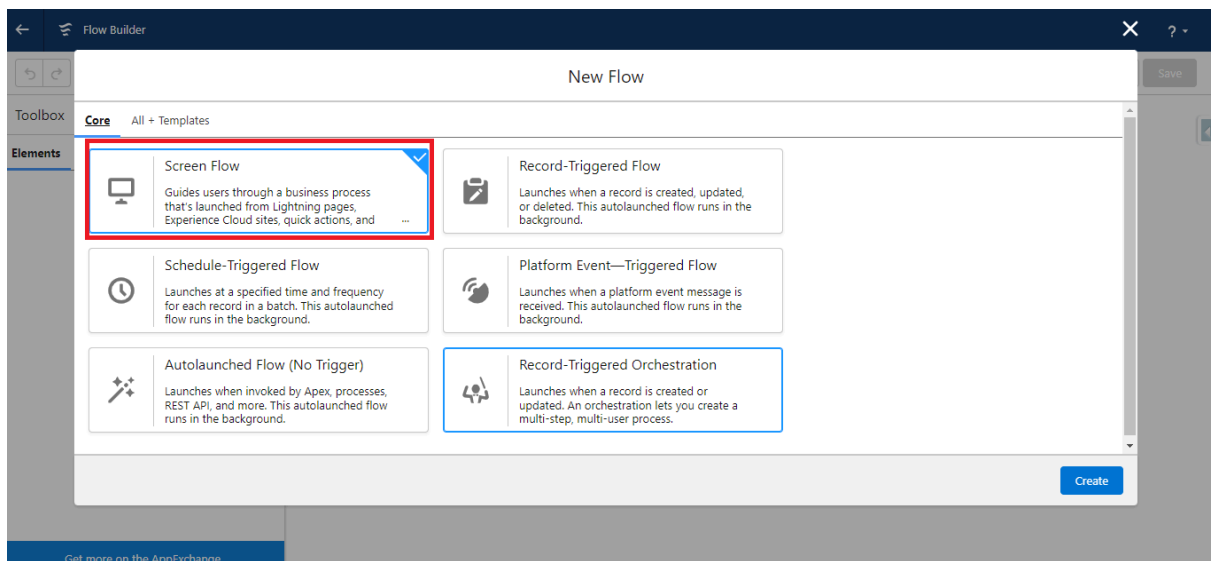
G-Link Use G-File Uploader in Screen Flow

Introduction

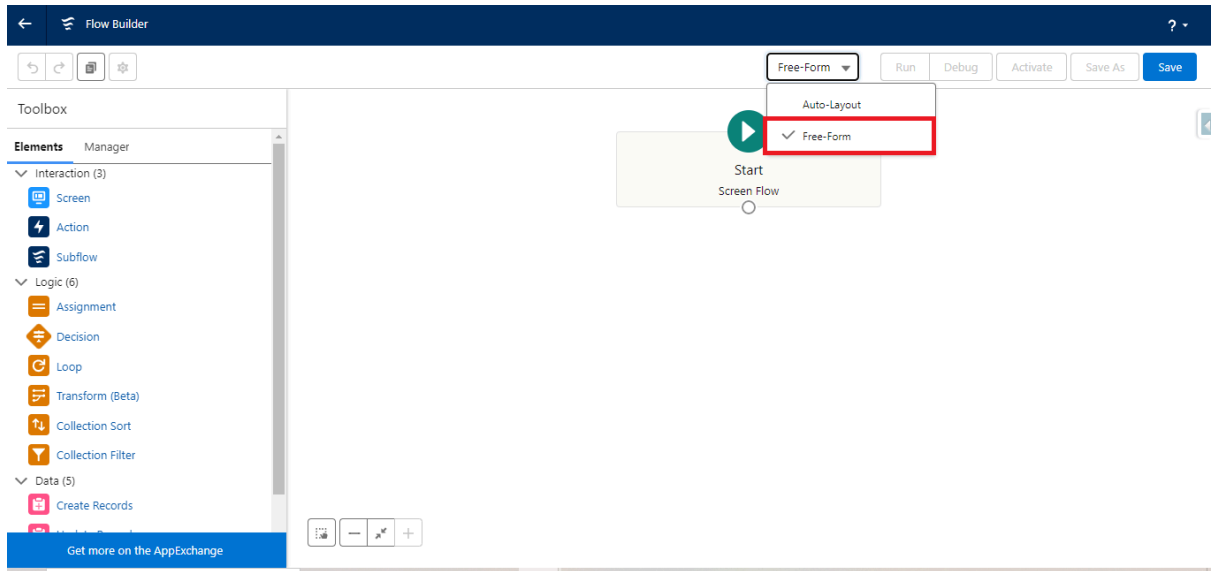
We have a feature that allows the G-Link Uploader component to be used in ScreenFlow. By using ScreenFlow you can upload the files in Google Drive. You just have to enable that feature by following the steps below.

Functionality Overview

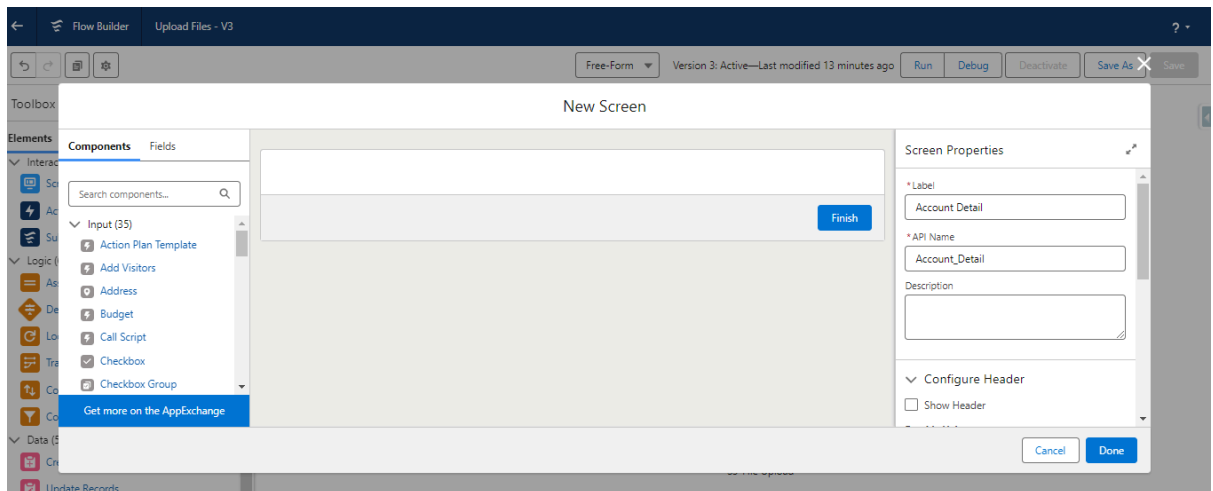
1. Go to **Setup** and Search **Flows** in the Quick Find Box.
2. Click on **New Flow**.
3. Select **Screen Flow**. And Click on **Create**



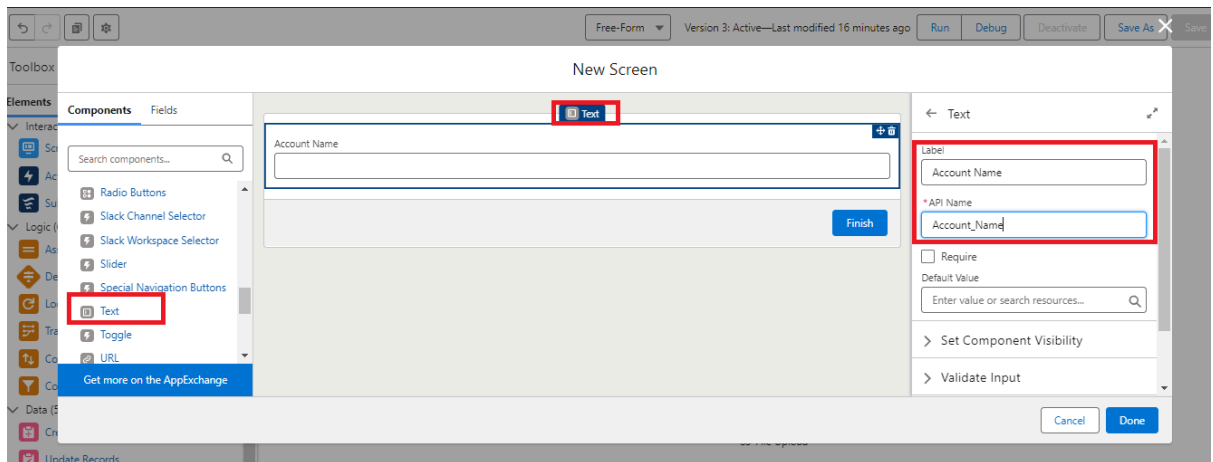
- After that select **Free Form**.



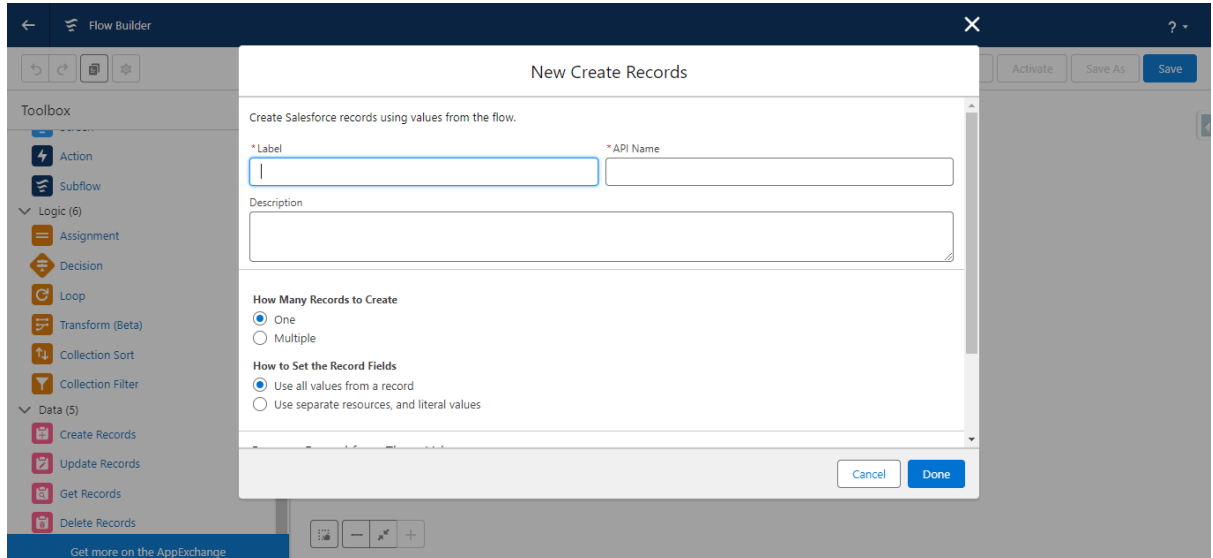
- Create a Screen Flow where users can input the name of the account on the first screen. Afterward, enable file uploading within that account record.
- Drag the screen flow in the canvas
- Add the label as Account Detail and keep the Finish button.



8. Add a text input field to the screen and label it as "Account Name" to allow users to input the name of the account. Click on Done.



9. Drag **Create Record**. This type of form will open.



10. After that fill in the data
- Label - Create Account
 - How Many Records to Create - One
 - How to Set the Record Fields - Use separate resources and literal values
 - Object - Account
 - Field -Account Name and Value Account Name from Screenflow where the user adds the value

3

Edit Create Records

Debug

How Many Records to Create

☒ One

☐ Multiple

How to Set the Record Fields

☐ Use all values from a record

☒ Use separate resources, and literal values

Create a Record of This Object

* Object

Account

Set Field Values for the Account

Field	Value
Name	← <input type="text" value="Aa Account_Name X"/>

+ Add Field

☐ Manually assign variables

Cancel Done

11. Also Manually assign variables - Mark as True

Edit Create Records

☐ Use all values from a record

☒ Use separate resources, and literal values

Create a Record of This Object

* Object

Account

Set Field Values for the Account

Field	Value
Name	← <input type="text" value="Aa Account_Name X"/>

+ Add Field

☒ Manually assign variables

Store Account ID in Variable

Variable

Cancel Done

12. Then add a new variable in the Variable input field. To create a new variable click on the variable and then select **New Resource**.

Edit Create Records

☐ Use all values from a record
☒ Use separate resources, and literal values

Create a Record of This Object

* Object
Account

Set Field

Field Name

Value Account_Name X

+ New Resource

SCREEN COMPONENTS

VARIABLES

Account_Id
Text

Global Variables

\$Flow

Search variables...

Cancel Done

13. Select the **Resource Type** as a **Variable**

API Name - Account_Id

Data Type - Text

Availability Outside the Flow - Mark true on Available for input

Click on Done

New Resource

* Resource Type
Variable

* API Name
AccountId

Description

* Data Type
Text

☐ Allow multiple values (collection) ⓘ

Default Value
Enter value or search resources...

Availability Outside the Flow

☒ Available for input

☐ Available for output

Cancel Done

14. Then select that Variable in the input field. And Click on Done

Edit Create Records

☐ Use all values from a record

☒ Use separate resources, and literal values

Create a Record of This Object

* Object
Account

Set Field Values for the Account

Field	Value
Name	← Aa Account_Name ×

+ Add Field

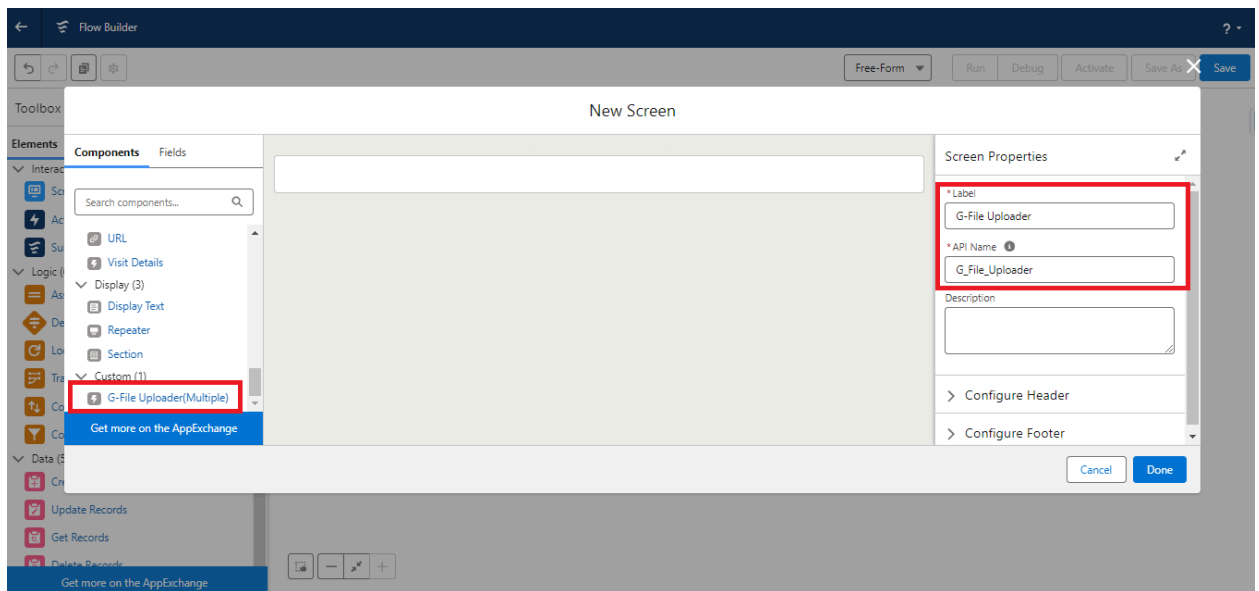
☒ Manually assign variables

Store Account ID in Variable

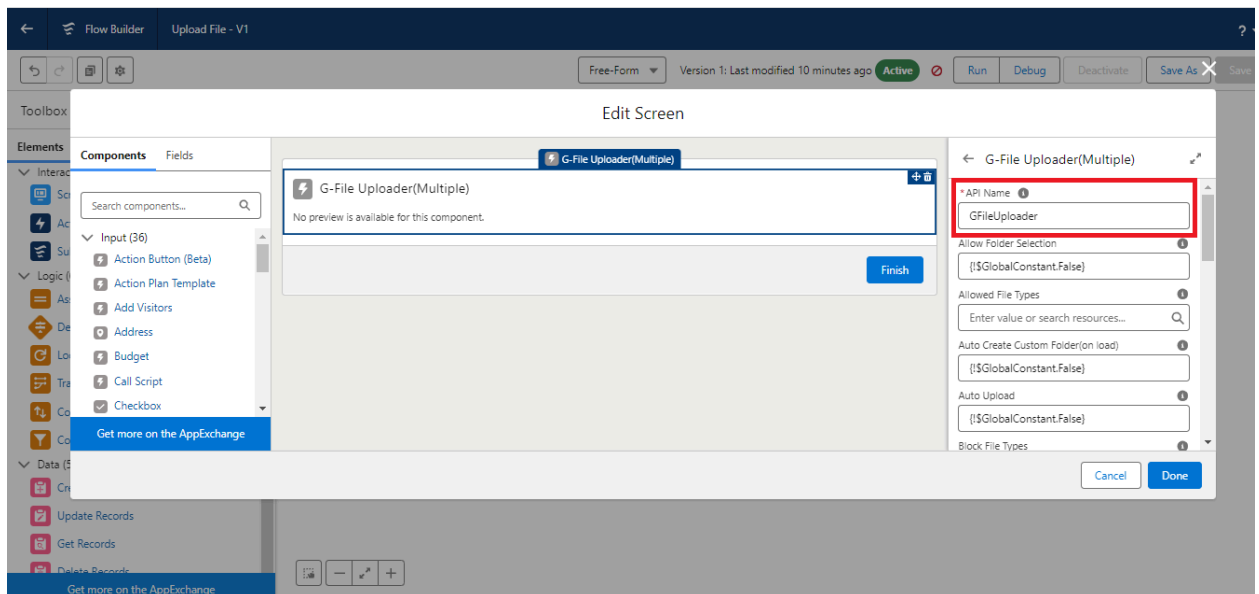
Variable
Aa Account_Id ×

Cancel Done

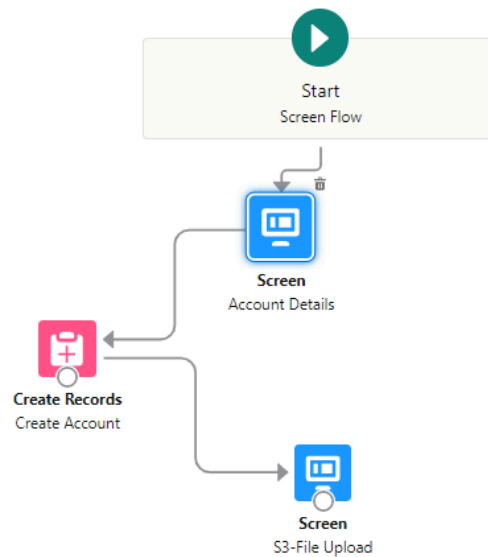
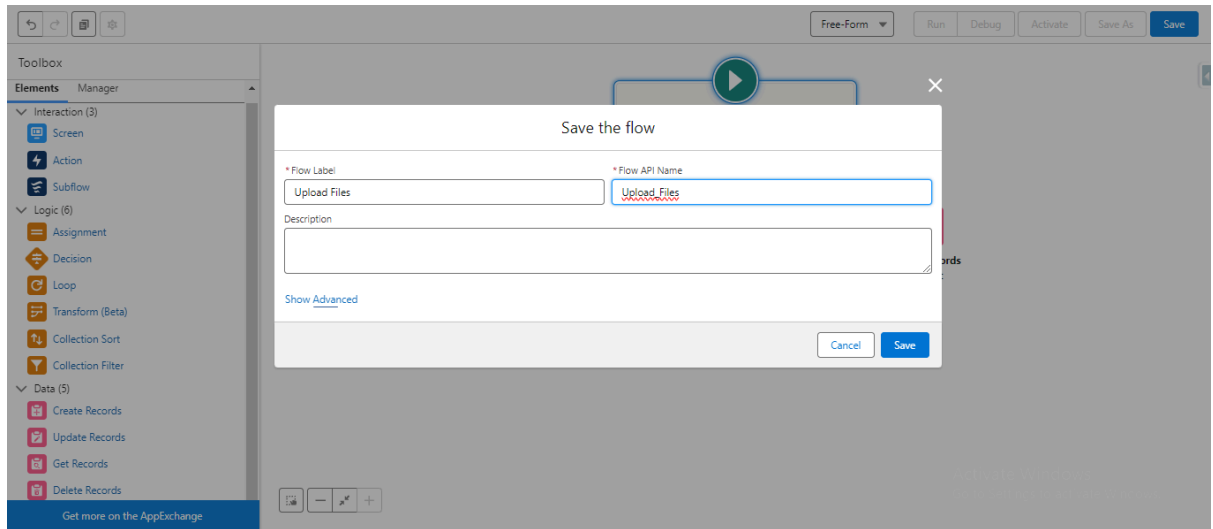
15. After that drag the screen flow.
16. Give Label Name - G-File Upload and mark false Header and Footer and Drag G-File Uploader(Multiple) components in the screen flow.



17. After dragging the component in the screen flow add **API Name - S3FileUploader**

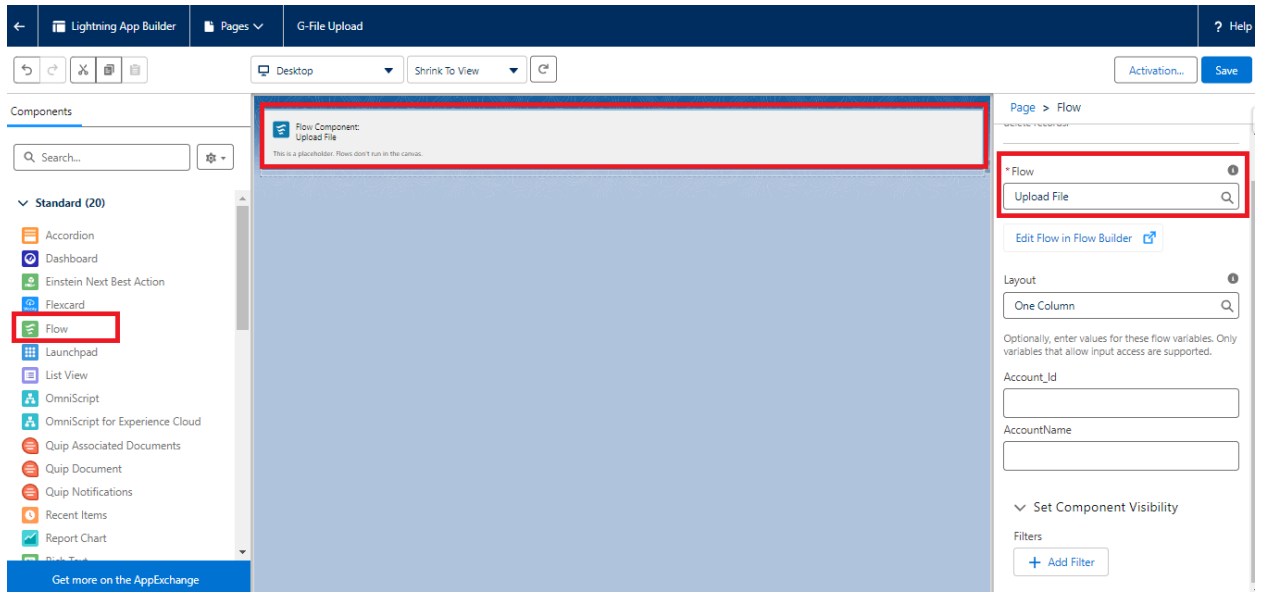


18. Click on the "Save" button, then provide a name for the flow, and finally, click on "Activate" to activate the flow.

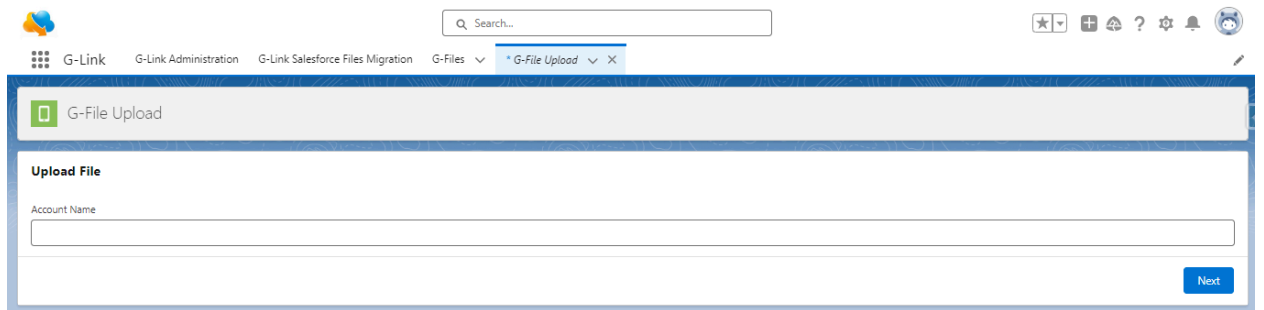


19. Upload that component to the App page. Create an app page.

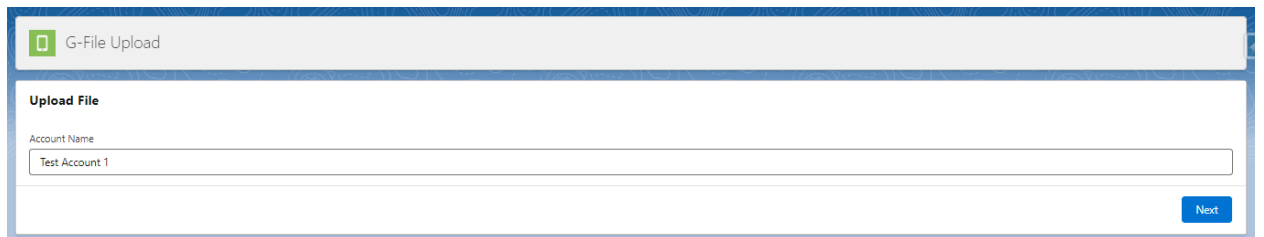
20. After creating the app page add Flow to that page and select Upload Files in flow



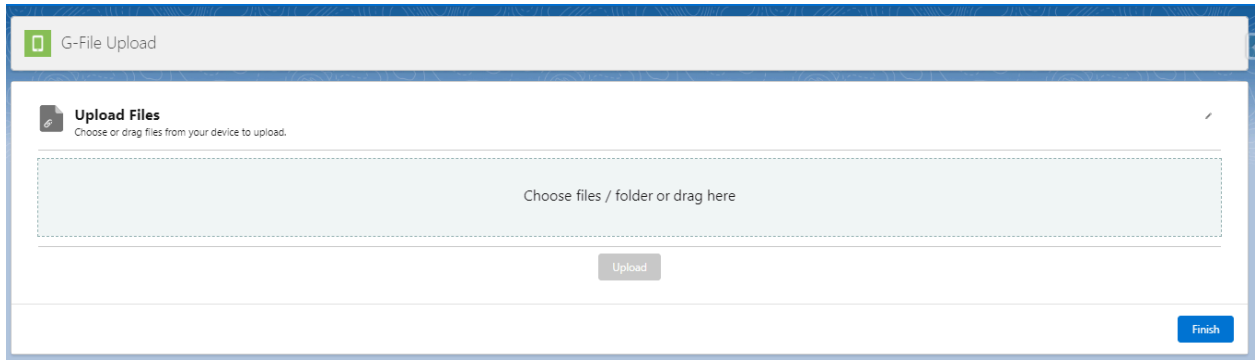
21. Click on Save.



22. Enter the account name and click on "Next."

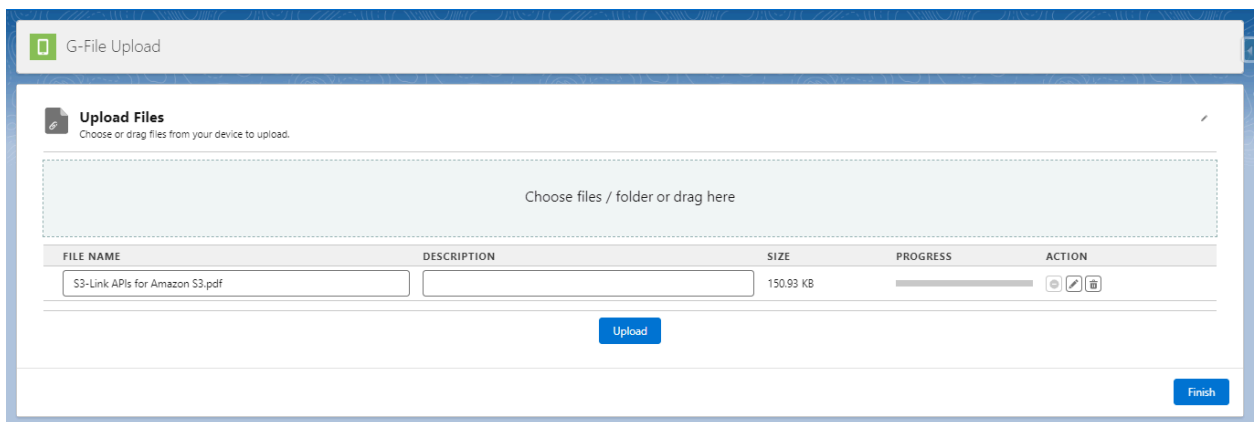


23. Once you've proceeded, the G File Uploader will open. Click on "Choose Files" to select the files you want to upload.






The screenshot shows the 'G-File Upload' interface. At the top, there's a header bar with the text 'G-File Upload'. Below it, a section titled 'Upload Files' contains the instruction 'Choose or drag files from your device to upload.' A large dashed rectangular box is centered, with the text 'Choose files / folder or drag here' inside. Below this box is a grey 'Upload' button. In the bottom right corner, there is a blue 'Finish' button.

24. Click on the "Upload" button to initiate the file upload process.



The screenshot shows the 'G-File Upload' interface after a file has been selected. The 'Upload Files' section now displays a table with the following data:

FILE NAME	DESCRIPTION	SIZE	PROGRESS	ACTION
S3-Link APIs for Amazon S3.pdf		150.93 KB	<div><div></div></div>	  

Below the table is a blue 'Upload' button. The 'Finish' button remains in the bottom right corner.

25. After uploading, the Account record will be created, and the file will be attached to that account record automatically.

26. Open G-File Explorer(Global) and check the record.

